

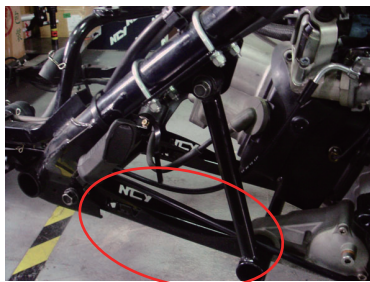
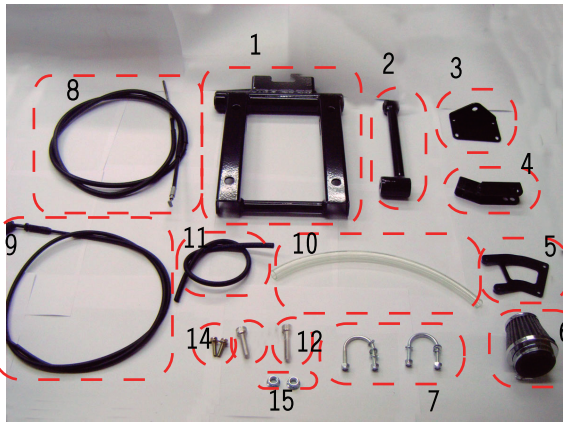
ADDRESS V125加長型引擎後移安裝說明(165MM)

ENGINE BACK MOVING SET 165MM FOR ADDRESS V125 INSTALLING MANUAL

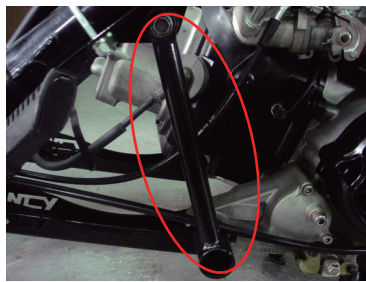
諸元表

PARTS LIST:

- | | |
|---------------------------------|--|
| 1. 本體.....1PC | 9. 油門線.....1PC |
| 1.MAIN BODY*1PC | 9.THROTTLE CABLE*1PC |
| 2. 狗骨頭.....1PC | 10. 呼吸管.....1PC |
| 2.ENGINE PULL ROD*1PC | 10.ABSORBER TUBE*1PC |
| 3. 狗骨頭固定座....1PC | 11. 負壓管.....1PC |
| 3.ENGINE PULL ROD BRACKET*1PC | 11.VACUUM TUBE*1PC |
| 4. 後移上座.....1PC | 12. 內六角白鐵螺絲 M10X1.25X45....1PC |
| 4.SHOCK BACK MOVING BRACKET*1PC | 12.STAINLESS HEX SOCKET SCREWS M10*1.25*45*1PC |
| 5. 高壓線圈固定座..1PC | 13. 內六角白鐵螺絲 M10X1.25X35....1PC |
| 5.HIGH TENSION COIL BRACKET*1PC | 13.STAINLESS HEX SOCKET SCREWS M10*1.25*35*1PC |
| 6. 濾清器.....1PC | 14. 外六角螺絲 M6X1.0X20....2PCS |
| 6.AIR CLEANER*1PC | 14.HEX HEAD CAP SCREWS M6*1.0*20*2PCS |
| 7. 配件螺絲.....1STE | 15. 六角墊片螺帽 M10.....2PCS |
| 7.ACCESSORIES*1SET | 15.HEX WAHSER NUT M10*2PCS |
| 8. 剎車線.....1PC | |
| 8.BRAKE LINE*1PC | |



1. 本體安裝位置
1.PLACE FOR INSTALLING MAIN BODY.



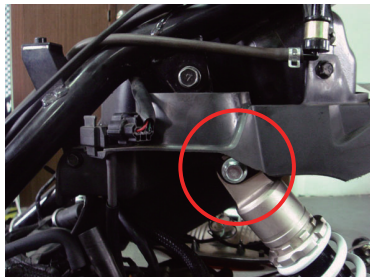
2. 狗骨頭安裝位置
2.PLACE FOR INSTALLING ENGINE PULL ROD.

配件螺絲

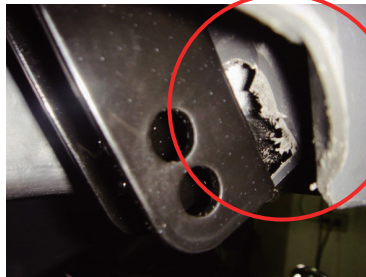
ACCESSORIES



狗骨頭固定座
ENGINE PULL ROD BRACKET
3. 狗骨頭固定座及配件螺絲安裝位置
3.PLACE FOR INSTALLING ENGINE PULL ROD BRACKET & ACCESSORIES.



4. 後移上座安裝位置
4.PLACE FOR INSTALLING SHOCK BACK MOVING BRACKET.



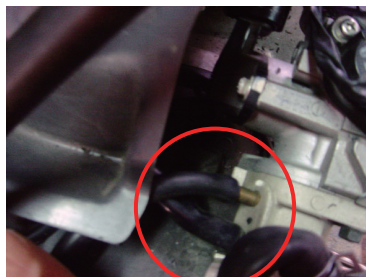
5. 安裝後移上座前需修改內裝
5.PLEASE AMEND INNER PARTS AS INSTALLING SHOCK BACK MOVING BRACKET.



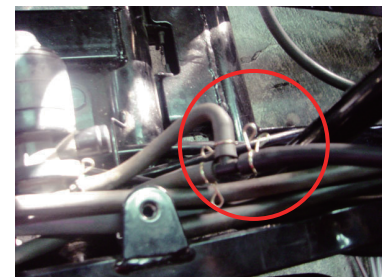
6. 高壓線圈固定座安裝位置
6.PLACE FOR INSTALLING HIGH TENSION COIL BRACKET.



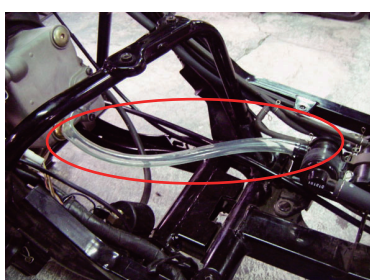
7. 濾清器安裝位置
7.PLACE FOR INSTALLING AIR CLEANER.



8. 負壓管器安裝位置
8.PLACE FOR INSTALLING VACUUM TUBE.



8. 負壓管器安裝位置
8.PLACE FOR INSTALLING VACUUM TUBE.



9. 呼吸管器安裝位置
9.PLACE FOR INSTALLING ABSORBER TUBE.



10. 安裝完成
10.FINISH.

注意事項

1. 安裝此產品須將車牌土除切除
2. 安裝此產品須更換油門線、剎車線及濾清器

NOTICE:

1. PLEASE CUT OFF FENDER OF LICENSE PLATE BOARD AS INSTALLING THIS PARTS.
2. NEED TO CHANGE THROTTLE CABLE, BRAKE LINE AND AIR CLEANER.