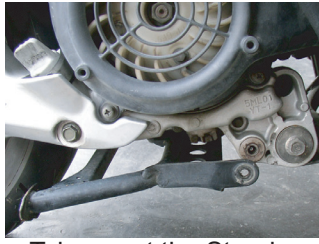


★ OIL COOLER INSTRUCTION MANUAL ★

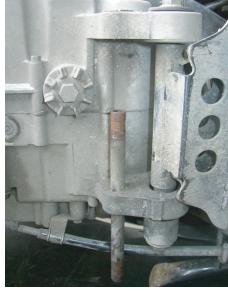
Applicable Model: CYGNUS.GTR

1. Make the motor lie on the floor. Don't discharge the oil; oil can't outpour.

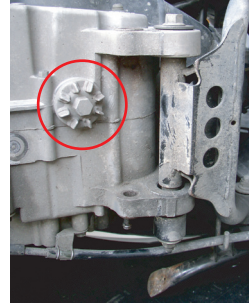


Take apart the Stander.

2. Take out the Stander Rod



3. Oil Pan Screw Cover.



4. Turn out and open.



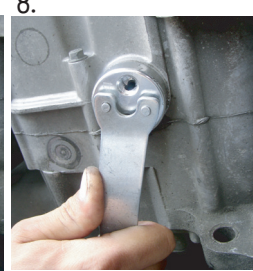
Make the parts taken apart from Step 4 locked very well with Side Part.

Before sticking the Black Rubber Ring, you have to add some Lubricating oil. (The parts have already added the lubricating oil so you don't need to use viscose to stick.)

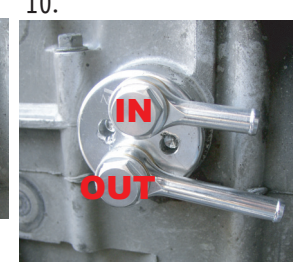
Install the tube and parts. (The order as the Attached Photo1.)



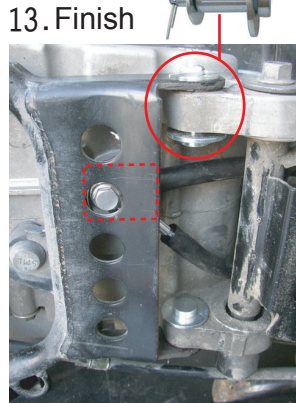
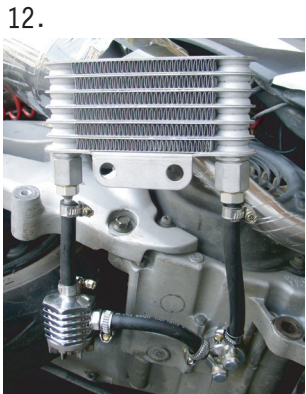
Turn and lock into the hole.



Lock the parts very well with the attached tool.



Before installing oil tube to Engine Oil Output Body, remember to pour oil into oil tube to test whether it passes through Oil Cooler or not. If oil passes through very well, you can install the oil tube and lock well directly. In order to make sure that there is no air in the oil tube and make the oil cycle well, so we have to check in advance.



Ⓞ IMPORTANT TESTING TO CHECK IN ADVANCE.



Check that whether the oil of oil level gauge reaches the standard or not and then add the oil by the situation.

Take apart Cylinder Head.

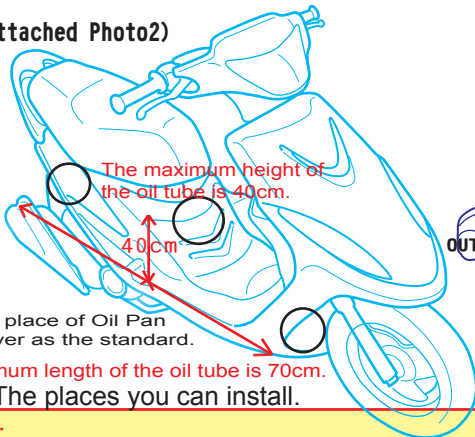


Start the engine to test the oil sprays out or not. If oil sprays out, that means the oil passes smoothly. If the oil doesn't spray out, that means you have to recheck the installing steps correct or not.

Attached Photo 3

Every part has to link the tube and remember to use the ring to lock it very well.

(Attached Photo2)

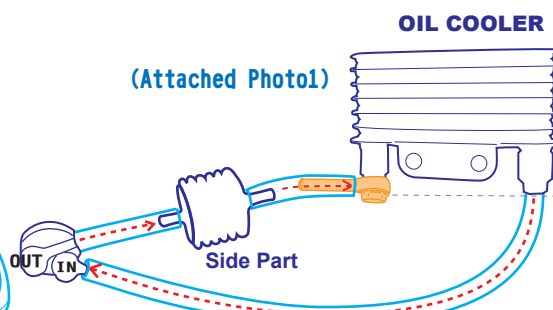


The install place of Oil Pan Screw Cover as the standard.

The maximum length of the oil tube is 70cm.

○ The places you can install.

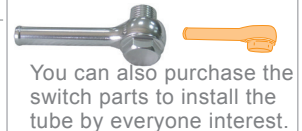
(Attached Photo1)



OIL COOLER

If the stander get stuck the screw, you will need to cut some part of the stander and change the screw we attached in this product.

Extra Purchasing Parts



You can also purchase the switch parts to install the tube by everyone interest.

You have to pay attention that the oil tube of "OUT" must link into Side Part. Finally, Side Part must link into Oil Cooler. So, the installing parts order is very important; you have to pay attention to it.

Attention:
 1. Oil Cooler belongs to the drawing method of "VACUUM - PRESSURE." So, you have to lock the oil tube and parts very well and don't change the oil tube or make it bigger in order to prevent from bad cycle.
 2. The first time to install or change oil before starting the motor, you have to pay attention to whether the oil is cycling or not. The checking method is to start motor about 5 minutes and then use the hand to touch Oil Cooler whether it is warm or not. If you feel a little warm that means oil has passed the tube and it works very normally. Please don't take apart the oil tube to check whether the oil has passed or not; that will lead to oil backflow because the insufficient "- PRESSURE."
 3. There is some limitation of the wide and height to install Oil Cooler. (Attached Photo2) The wide is not over 70cm; the height is not over 40cm. That is in order to prevent from insufficient oil pressure that will make the oil work unmorally.
 4. You have to take apart Cylinder Head to check oil sprays out or not (see Attached Photo 3) and use the oil level gauge to check the oil and then add it by the situation.