

油冷排說明書

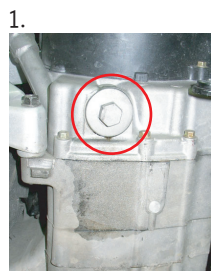
OIL COOLER INSTRUCTION MANUAL

適用車種: SYM125車系
FIGHTER150

黑色橡膠圈在貼合之前需加黃油潤滑
(出廠時零件上已有潤滑油, 請勿用黏膠接著)

Applicable Model---SYM125/FIGHTER150

Before sticking the Black Rubber Ring, you have to add some Lubricating Oil.
(The parts have already been added the lubricating oil, so you don't need to use viscose to stick.)



1. 機油底殼螺絲
(建議拆掉中柱較容易安裝)
OIL PAN SCREW COVER.
(SUGGEST TO TAKE APART MAIN STAND TO MAKE INSTALL EASIER.)



2. 旋轉開
TURN OUT AND OPEN



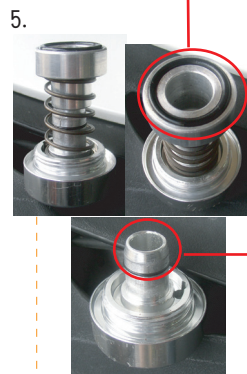
3. 拆下零件
PARTS TAKEN APART

將圖2拆下的零件和側體鎖緊
(在組裝前需檢查是否有異物)

MAKE PARTS TAKEN APART FROM
STEP 2 LOCK WELL WITH SIDE PART.
(BEFORE INSTALLING, PLEASE CHECK PARTS CLEAN.)

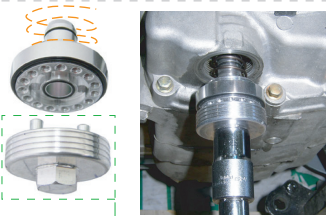


4. 需連同銅環鎖緊
LOCK WITH COPPER RING.



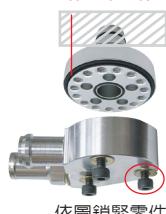
5.

6.



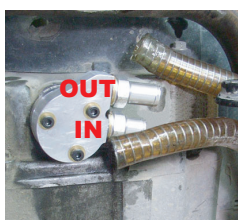
用附加的工具鎖入步驟5零件
USE ATTACHED TOOL TO LOCK PARTS OF STEP 5

7. 需注意在接合時O型環
是否在定位上
NOTICE OIL RING ON
THE CORRECT POSITION



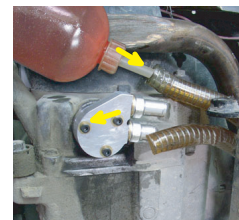
依圖鎖緊零件
連同銅環鎖緊螺絲
LOCK PARTS WITH COPPER
RING AS PHOTO ABOVE.

8.



依步驟7鎖上機油導出機構並依(附圖1)
連接油管及油冷排
INSTALL OIL OUTPUT BODY, TUBE AND PARTS.
(ORDER AS ATTACHED PHOTO 1.)

9.



在油管連接機油導出機構前先用機油緩慢注入油管内直至機油
通過油冷排從另一端流出, 即可鎖上油管確保油管内無空氣可加
速油路循環

BEFORE INSTALLING OIL TUBE TO ENGINE OIL OUTPUT BODY, REMEMBER TO POUR OIL
INTO OIL TUBE TO TEST WHETHER IT PASSES THOROUGH OIL COOLER OR NOT. IF OIL
PASSES THROUGH VERY WELL, YOU CAN INSTALL OIL TUBE AND LOCK WELL DIRECTLY.
IN ORDER TO MAKE SURE THAT THERE IS NO AIR INSIDE OIL TUBE AND MAKE OIL CYCLE
WELL, SO WE HAVE TO CHECK THIS IN ADVANCE.

重要檢測步驟 IMPORTANT TESTING TO CHECK IN ADVANCE.



檢查機油尺油量是否到達標準刻度
並酌量加入機油
CHECK THAT WHETHER OIL LEVEL OF OIL LEVEL
GAUGE REACHES STANDARD OR NOT AND
THEN ADD OIL BY THE SITUATION.



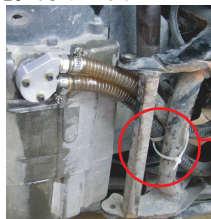
拆開汽缸頭蓋
TAKE APART CYLINDER HEAD



發動引擎檢測是否有機油噴出
若有機油噴出, 則顯示機油順利流通
若無則需重新檢查安裝步驟是否正確
START ENGINE TO TEST OIL SPARRYING OUT OR NOT.
IF OIL SPARRYS OUT, THAT MEANS OIL PASSES SMOOTHLY.
IF OIL DOESN'T SPARRY OUT, THAT MEANS YOU HAVE
TO RECHECK INSTALLING STEPS CORRECT OR NOT AGAIN.

附圖3
Attached Photo 3

10. 完成 FINISH.



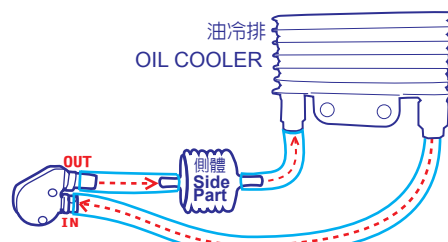
勿將油管與中柱綁緊以免車身行進震動時拉扯油管導致接頭脫落
DON'T LOCK OIL TUBE WITH MAIN STAND TOGETHER.
AS RIDING SCOOTER, SCOOTER BODY WILL MAKE OIL TUBE RELEASE.

- 可安裝位置
以機油底殼螺絲蓋安裝處為基準點計算
- The places you can install.
The install place of Oil Pan
Screw Cover as the standard.

油管線安裝最高的高度是40cm
The maximum height of
the oil tube is 40cm.

油管線安裝最長的長度是70cm
The maximum length
of the oil tube is 70cm.

(附圖2)
Attached Photo 2



(附圖1)
Attached Photo 1

必須注意OUT的油管線要接"側體"再接到油冷排
因此安裝零件順序需特別注意
You have to pay attention that the oil tube of "OUT"
must link into Side Part. Finally, Side Part must link
into Oil Cooler. So, the installing parts order is very important;
you have to pay attention to it.

注意事項:

1. 機油冷卻器採"真空負壓"吸汲方式, 所以管路必須密封鎖緊, 且管路勿自行加大, 防止油路循環不良
2. 車輛第一次安裝或更換機油需注意, 在啟動車輛時需注意油路是否正常循環, 檢查方式是在發動約5分鐘之後, 以手觸摸油冷排是否有溫熱, 若有溫熱才能確定油路有正常循環, 請勿拆開管路檢查機油是否通過, 會因此負壓不足, 導致機油回流。
3. 油冷排安裝寬度及高度有限制(如附圖2)寬度不超過70cm; 高度不超過40cm, 以防油壓不足無法正常運作
4. 需拆開汽缸頭蓋, 檢查機油是否正常噴出(附圖3)以及由機油尺檢查機油量並酌量添加機油。

Attention:

1. Oil Cooler belongs to the drawing method of "VACUUM - PRESSURE." So, you have to lock the oil tube and parts very well and don't change the oil tube or make it bigger in order to prevent from bad cycle.
2. The first time to install or change oil before starting the motor, you have to pay attention to whether the oil is cycling or not. The checking method is to start motor about 5 minutes and then use the hand to touch Oil Cooler whether it is warm or not. If you feel a little warm that means oil has passed the tube and it works very normally. Please don't take apart the oil tube to check whether the oil has passed or not; that will lead to oil backflow because the insufficient " - PRESSURE."
3. There is some limitation of the wide and height to install Oil Cooler. (Attached Photo2) The wide is not over 70cm; the height is not over 40cm. That is in order to prevent from insufficient oil pressure that will make the oil work unmorally.
4. You have to take apart Cylinder Head to check oil spraying out or not (see Attached Photo 3) and use the oil level gauge to check the oil and then add it by the situation.