



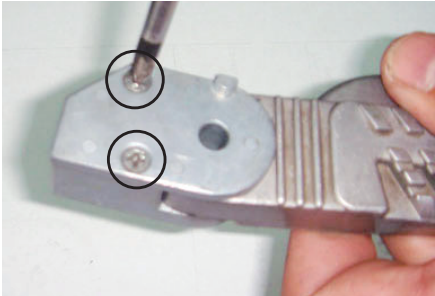
YAMAHA/SYM 腳踏桿組

ALUMINUM FOOTREST ROD SET INSTALLING

■ 安裝說明書

- 感謝您購買 **NCY** 產品，在此向您至萬分謝意。使用之前，請您務必詳讀並參照安裝說明，並且正確組裝。
- Before installing, please read Installing Manual well.

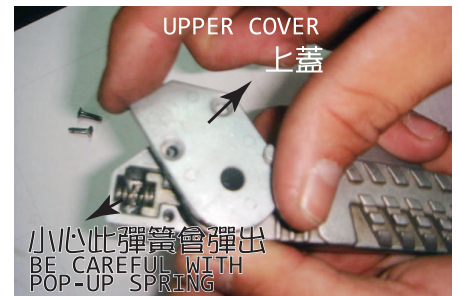
■ 1-1 產品組裝說明：INSTALLING MANUAL：



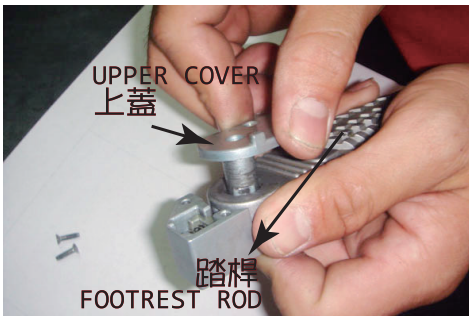
1. 原車腳踏桿螺絲拆下。
REMOVE SCREWS OF ORIGINAL FOOTREST ROD SET.



2. 輕推腳踏桿背面基礎座上蓋軸心使上蓋與基座分離。(小心彈簧會彈出)
LIGHTLY PUSH UPPER COVER SHAFT OF BACK FOOTREST ROD BASE TO MAKE UPPER COVER AND BASE SEPERATED.
PS. (BE CAREFUL FOR POP-UP SPRING)



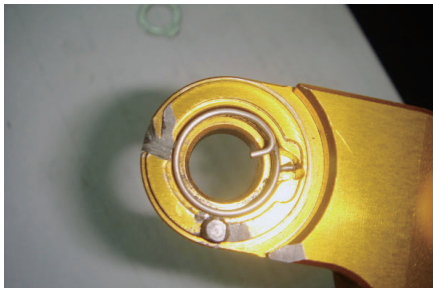
3. 順著彈簧的力量將上蓋旋轉180度。
FOLLOW SPRING STRENGTH TO TURN UPPER COVER 180°.



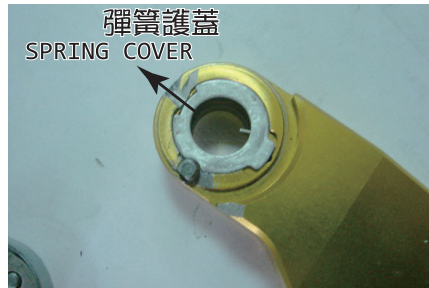
4. 向上取出上蓋與踏桿。
TAKE OFF UPPER COVER AND FOOTREST ROD.



5. 取出原廠腳踏桿背面之旋轉彈簧與彈簧護蓋。(取出時須注意旋轉彈簧置入的方向)
REMOVE THE ROTATING SPRING & SPRING COVER FROM THE BACK OF ORIGINAL FOOTREST ROD. (NOTICE THE INSTALLING DIRECTION OF ROTATING SPRING AS REMOVING).



6. 將旋轉彈簧置入NCY之腳踏桿內部，旋轉彈簧置入時方向要與原廠相同。
INSTALL THE ROTATING SPRING INTO NCY FOOTREST ROD, DIRECTION OF ROTATING SPRING MUST BE SAME WITH ORIGINAL ONE.



7. 蓋上彈簧護蓋。
PUT SPRING COVER.



8. 將基座本體的卡准予C型鉤固定於相關位置如上圖。
FIX THE BASE LATCH AND C-SHAPE HOOK INTO RELATED POSITION SHOWN ABOVE PHOTO

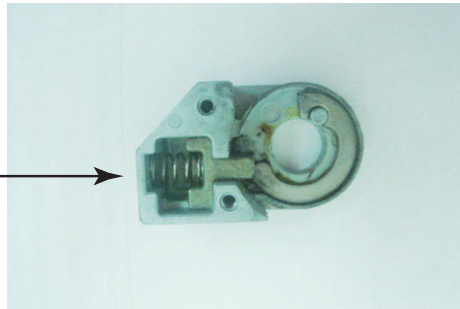
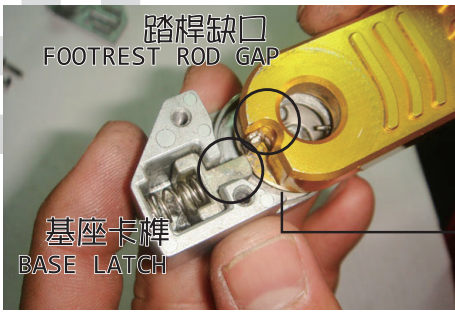
注意事項：建議以下拆卸與組裝之動作請在透明塑膠袋內進行，因為基座內部的彈簧很容易彈出而不見，以下說明是為了給客人看清楚，所以未在塑膠袋內進行，請詳細閱讀以下內容後再進行安裝。

NOTICE: WE SUGGEST YOU DISASSEMBLE AND INSTALL THE PARTS IN THE TRANSPARENT PLASTIC BAG, BECAUSE THE INNER SPRING OF THE BASE IS VERY EASY TO POP UP AND GET LOST. IN ORDER TO BE SHOWN STEPS CLEARLY, THE FOLLOWING INSTRUCTION WE DIDN'T WORK IN THE PLASTIC BAG. PLEASE READ CLEARLY BEFORE INSTALLING.



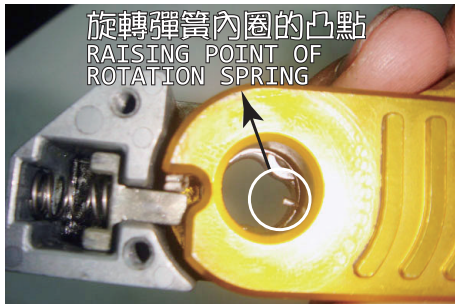
9. 利用基座卡准予腳踏桿缺口由上而下置入，有聽到卡一聲，代表有放進去了。

PUT THE BASE LATCH INTO FOOTREST ROD GAP FROM THE TOP. THE ROD IS FIXED WITH A CLICK.



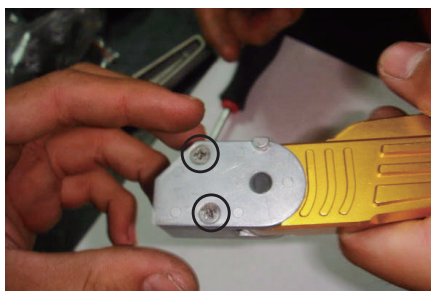
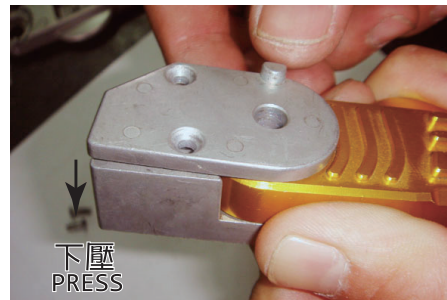
10. 將旋轉彈簧內圈的凸點，對準基座上蓋的缺口置入。

PUT THE RAISING POINT OF ROTATION SPRING INTO THE GAP OF THE BASE UPPER COVER.



11. 順著彈簧的方向將基座上蓋旋轉180度後將上蓋往下壓使上蓋與基座結合。

FOLLOW SPRING DIRECTION TO TURN UPPER COVER 180°. PRESS THE UPPER COVER TO FIX TOGETHER WITH THE BASE.



12. 將螺絲鎖上，並測試腳踏桿作動是否正常，若無法作動則請重第七步驟重新安裝一次。

LOCK UPPER COVER WITH SCREWS AND CHECK IF THE MOVEMENT OF FOOTREST ROD SET WORKS NORMALLY. IF NOT, PLEASE FOLLOW STEP 7 AND INSTALL AGAIN.

13. 若腳踏桿是否正常，則再依序將腳踏桿裝回車上即可安裝完成。

OTHER IF THE FOOTREST ROD SET WORKS NORMALLY, INSTALL IT ON THE SCOOTER DIRECTLY.