

- 感謝您購買 **NCY** 產品，在此向您致上萬分謝意。使用之前，請您務必詳讀並參照安裝說明，並且正確組裝。
- Before installing, please read Installing Manual well.

■ 1-1 主產品-可調式拉桿/ N-23 KNOB ADJUSTABLE BRAKE LEVER

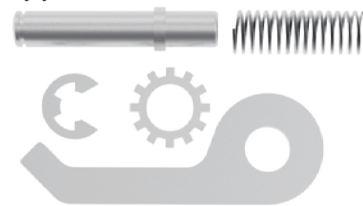
拉桿/頭段採AL-6061 T6 高強度鋁合金。
Brake lever & Front part with w/ High Strength
Aluminum 6061 T6.



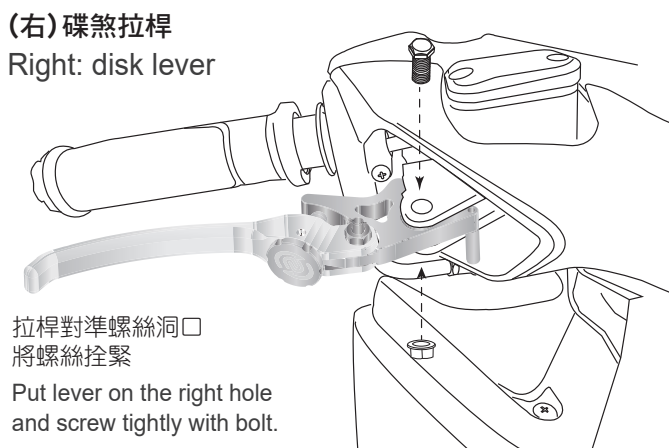
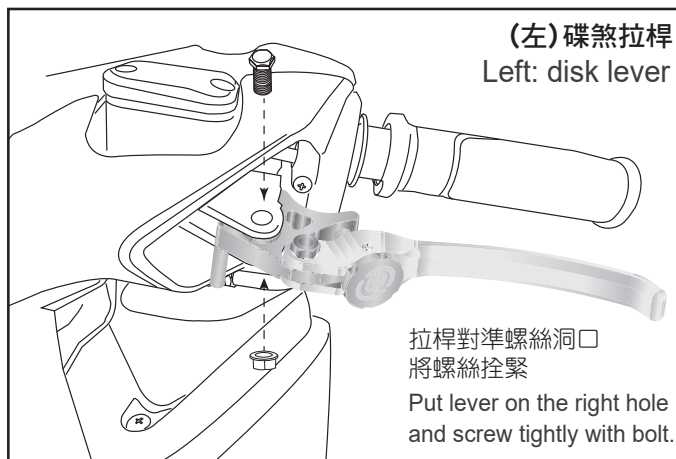
加購配件包/Accessory kits:

消費者若有需求後輪駐車可另購買
配件包，自行安裝。

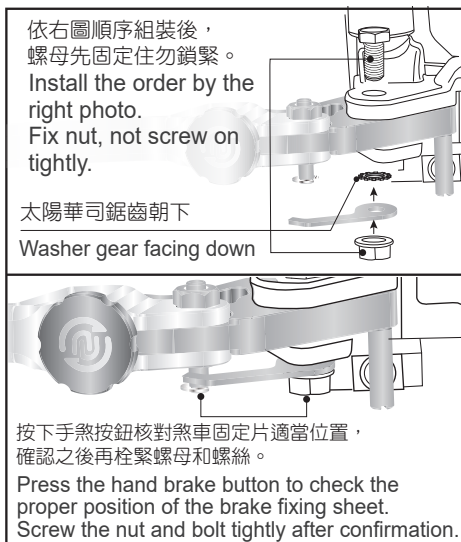
If the end user needs the rear wheel
parking, please buy the accessory
kits additionally and install them
by yourself.



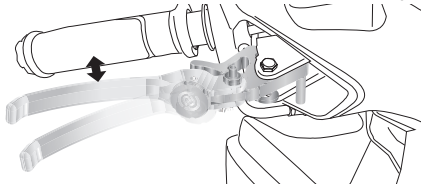
■ 2-1 安裝示意圖 Installing Manual



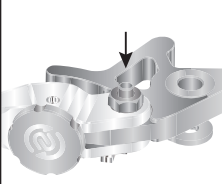
■ 3-1 安裝說明 Installing Manual



設定剎車鎖定功能時，按壓拉桿請保留一點間隙
方便拉桿有空間解鎖。
As setting braking locking function,
keep a little bit space as pressing lever,
make lever have the space to unlock easily.



壓緊煞車拉桿，按下手
煞車按鈕 固定住拉桿。
Press lever tightly,
press the hand brake
button to fix the lever.



再用力拉桿壓到底，
手煞車按鈕自動彈回
解除鎖定。
Press the lever to the
bottom again.
Hand brake button
spring back automatically
to unlock.



※手煞車功能僅為輔助臨時駐停&斜坡停車時使用，請勿長時間使用手煞車功能。

Hand brake function is only used to assist the temporary parking and hill side parking.
Do not use the handbrake function for a long time.

※安裝時請避免使用過大的煞車力道，以免造成煞車系統長期承受壓力導致漏油。

Please avoid using excessive brake force when installing.
In order to prevent the brake system from being under pressure for a long time and causing
oil leakage.

※ 本產品機構經專業組裝請勿自行拆解。
This product structure has been professionally
assembled; please do not disassemble it by yourself.

※ 如有拆裝駐車配件，必需更換太陽華司。
If disassembling parking accessories, please
must change the washer gear.



- 感謝您購買 **NCY** 產品，在此向您致上萬分謝意。使用之前，請您務必詳讀並參照安裝說明，並且正確組裝。
- Before installing, please read Installing Manual well.

■ ■ 1-1 主產品-可調式拉桿/ N-23 KNOB ADJUSTABLE BRAKE LEVER

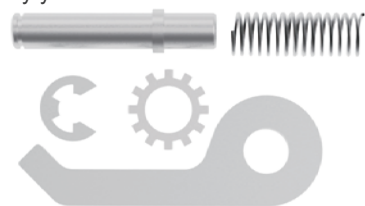
拉桿/頭段採AL-6061 T6 高強度鋁合金。



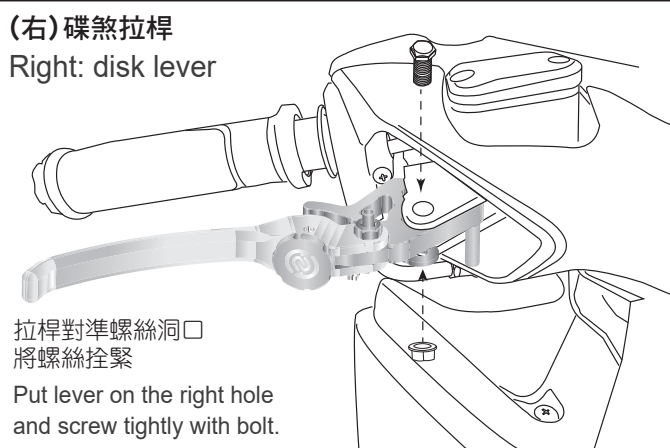
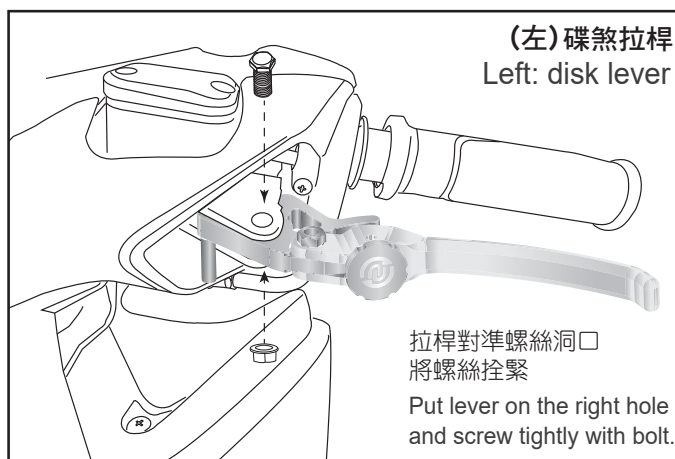
加購配件包/Accessory kits:

消費者若有需求後輪駐車可另購買配件包，自行安裝。

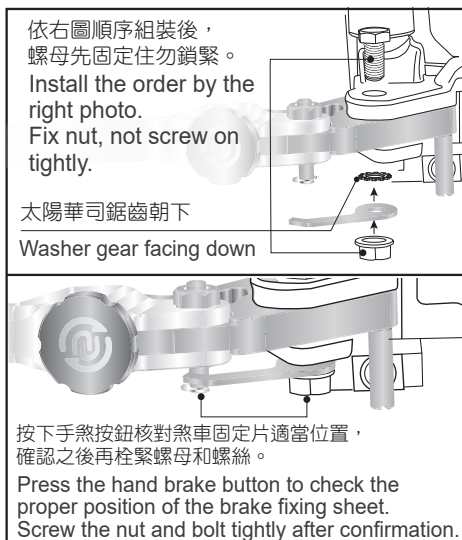
If the end user needs the rear wheel parking, please buy the accessory kits additionally and install them by yourself.



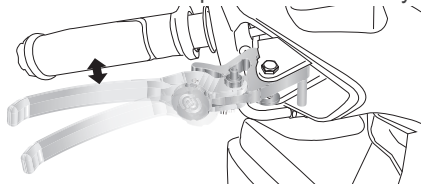
■ ■ 2-1 安裝示意圖 Installing Manual



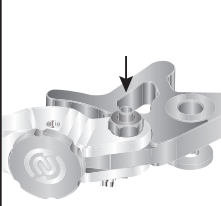
■ ■ 3-1 安裝說明 Installing Manual



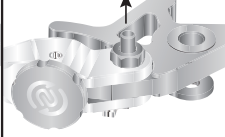
設定剎車鎖定功能時，按壓拉桿請保留一點間隙方便拉桿有空間解鎖。
As setting braking locking function, keep a little bit space as pressing lever, make lever have the space to unlock easily.



壓緊煞車拉桿，按下手煞車按鈕 固定住拉桿。
Press lever tightly, press the hand brake button to fix the lever.



再用力拉桿壓到底，手煞車按鈕自動彈回解除鎖定。
Press the lever to the bottom again. Hand brake button spring back automatically to unlock.



※手煞車功能僅為輔助臨時駐停&斜坡停車時使用，請勿長時間使用手煞車功能。

Hand brake function is only used to assist the temporary parking and hill side parking. Do not use the handbrake function for a long time.

※安裝時請避免使用過大的煞車力道，以免造成煞車系統長期承受壓力導致漏油。

Please avoid using excessive brake force when installing. In order to prevent the brake system from being under pressure for a long time and causing oil leakage.

※ 本產品機構經專業組裝請勿自行拆解。
This product structure has been professionally assembled; please do not disassemble it by yourself.

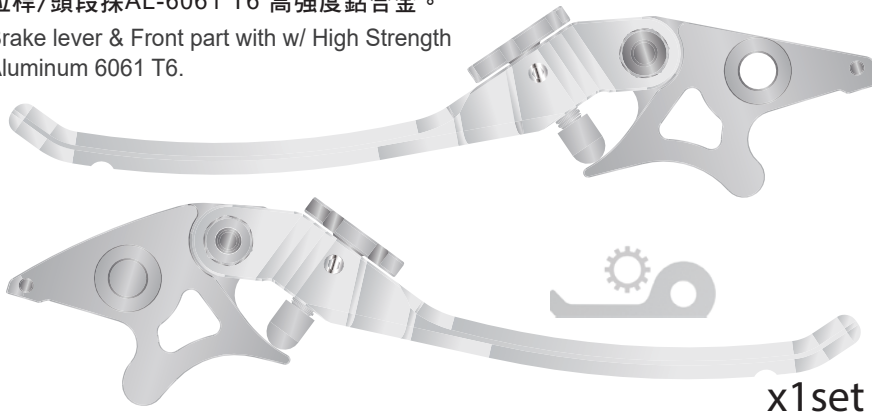
※ 如有拆裝駐車配件，必需更換太陽華司。
If disassembling parking accessories, please must change the washer gear.



- 感謝您購買 **NCY** 產品，在此向您致上萬分謝意。使用之前，請您務必詳讀並參照安裝說明，並且正確組裝。
- Before installing, please read Installing Manual well.

■■ 1-1 主產品-可調式拉桿/ N-23 KNOB ADJUSTABLE BRAKE LEVER

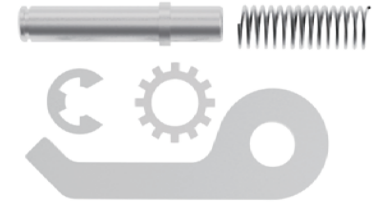
拉桿/頭段採AL-6061 T6 高強度鋁合金。
Brake lever & Front part with w/ High Strength Aluminum 6061 T6.



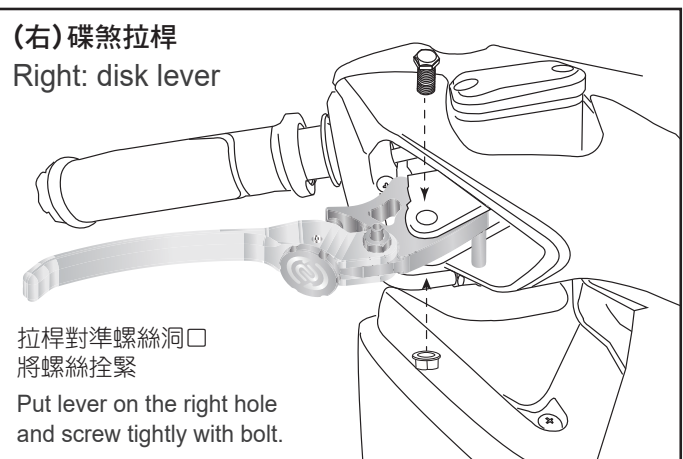
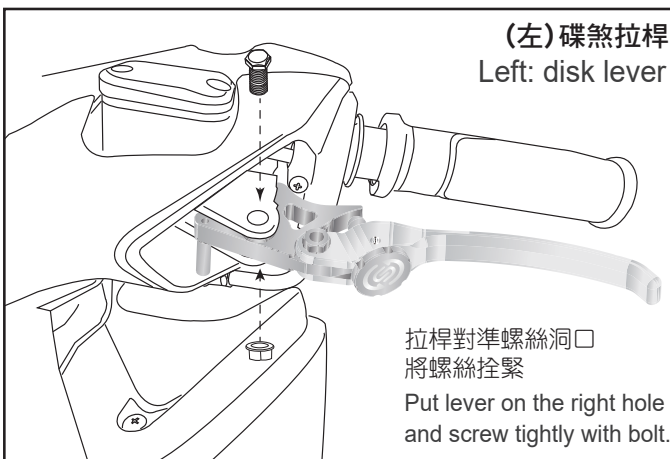
加購配件包/Accessory kits:

消費者若有需求後輪駐車可另購買配件包，自行安裝。

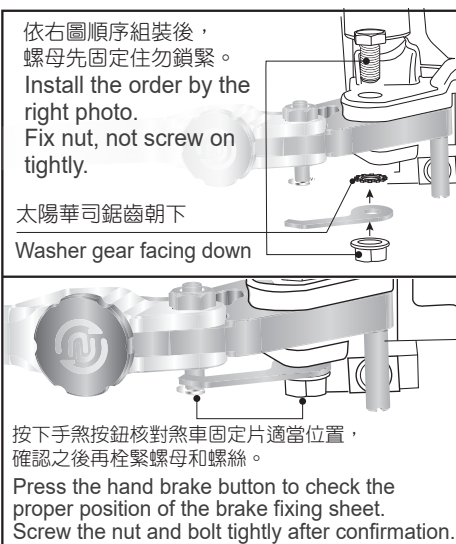
If the end user needs the rear wheel parking, please buy the accessory kits additionally and install them by yourself.



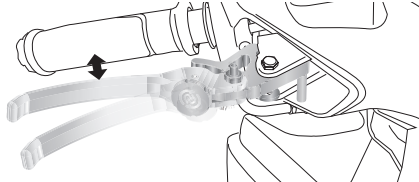
■■ 2-1 安裝示意圖 Installing Manual



■■ 3-1 安裝說明 Installing Manual



設定剎車鎖定功能時，按壓拉桿請保留一點間隙方便拉桿有空間解鎖。
As setting braking locking function, keep a little bit space as pressing lever, make lever have the space to unlock easily.



壓緊煞車拉桿，按下手煞車按鈕 固定住拉桿。
Press lever tightly, press the hand brake button to fix the lever.



再用力拉桿壓到底，手煞車按鈕自動彈回解除鎖定。
Press the lever to the bottom again. Hand brake button spring back automatically to unlock.



※手煞車功能僅為輔助臨時駐停&斜坡停車時使用，請勿長時間使用手煞車功能。

Hand brake function is only used to assist the temporary parking and hill side parking. Do not use the handbrake function for a long time.

※安裝時請避免使用過大的煞車力道，以免造成煞車系統長期承受壓力導致漏油。

Please avoid using excessive brake force when installing. In order to prevent the brake system from being under pressure for a long time and causing oil leakage.

※ 本產品機構經專業組裝請勿自行拆解。
This product structure has been professionally assembled; please do not disassemble it by yourself.

※ 如有拆裝駐車配件，必需更換太陽華司。
If disassembling parking accessories, please must change the washer gear.

