

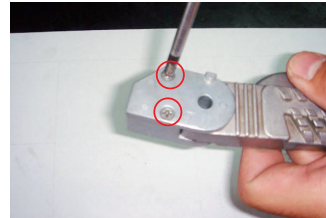
# YAMAHA/SYM

## ALUMINUM FOOTREST ROD SET INSTALLING MANUAL

NOTICE: WE SUGGEST YOU DISASSAMBLE AND INSTALL THE PARTS IN THE TRANSPARENT PLASTIC BAG, BECAUSE THE INNER SPRING OF THE BASE IS VERY EASY TO POP UP AND GET LOST. IN ORDER TO BE SHOWN STEPS CLEARLY, THE FOLLOWING INSTRUCTION WE DIDN'T WORK IN THE PLASTIC BAG. PLEASE READ CLEARLY BEFORE INSTALLING.

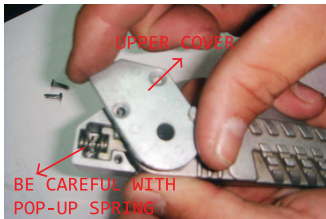


1. TAKE OFF ORIGINAL FOOTREST ROD SET FROM SCOOTER.

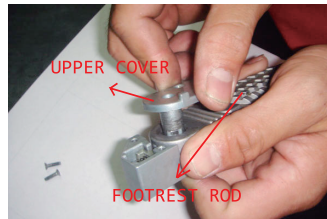


2. REMOVE SCREWS OF ORIGINAL FOOTREST ROD SET.

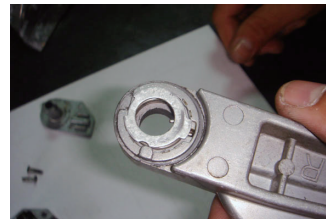
3. LIGHTLY PUSH UPPER COVER SHAFT OF BACK FOOTREST ROD BASE TO MAKE UPPER COVER AND BASE SEPERATED.  
PS. (BE CAREFUL FOR POP-UP SPRING)



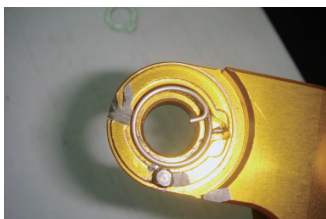
4. FOLLOW SPRING STRENGTH TO TURN UPPER COVER 180°.



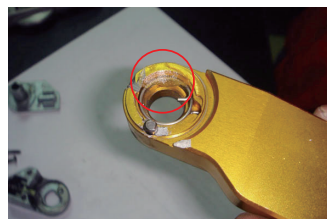
5. TAKE OFF UPPER COVER AND FOOTREST ROD.



6. REMOVE THE ROTATING SPRING & SPRING COVER FROM THE BACK OF ORIGINAL FOOTREST ROD. (NOTICE THE INSTALLING DIRECTION OF ROTATING SPRING AS REMOVING).



7. INSTALL THE ROTATING SPRING INTO NCY FOOTREST ROD, DIRECTION OF ROTATING SPRING MUST BE SAME WITH ORIGINAL ONE.



8. ADD SOME GREASE FOR EASY WORKING.



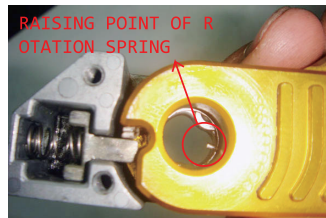
9. PUT SPRING COVER.



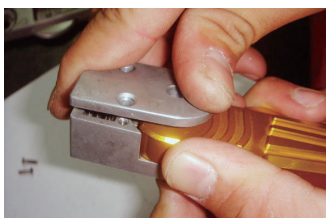
10. FIX THE BASE LATCH AND C-SHAPE HOOK INTO RELATED POSITION SHOWN ABOVE PHOTO



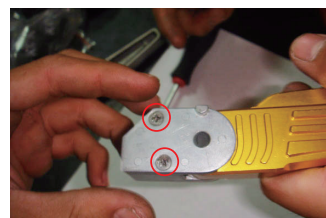
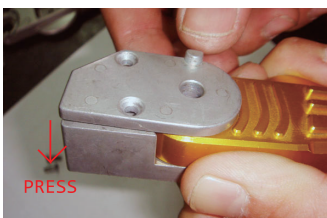
11. PUT THE BASE LATCH INTO FOOTREST ROD GAP FROM THE TOP. THE ROD IS FIXED WITH A CLICK.



12. PUT THE RAISING POINT OF ROTATION SPRING INTO THE GAP OF THE BASE UPPER COVER.



13. FOLLOW SPRING DIRECTION TO TURN UPPER COVER 180°. PRESS THE UPPER COVER TO FIX TOGETHER WITH THE BASE.



14. LOCK UPPER COVER WITH SCREWS AND CHECK IF THE MOVEMENT OF FOOTREST ROD SET WORKS NORMALLY. IF NOT, PLEASE FOLLOW STEP 7 AND INSTALL AGAIN.



15. IF THE FOOTREST ROD SET WORKS NORMALLY, INSTALL IT ON THE SCOOTER DIRECTLY.