

# 野狼油冷排說明書

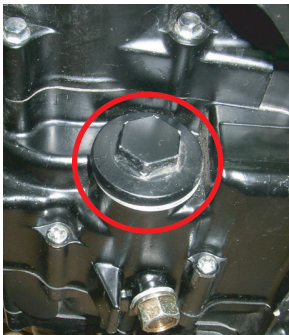
## WOLF OIL COOLER INSTRUCTION MANUAL

適用車種:野狼.雲豹.KTR  
AVAILABLE: WOLF/HD/KTR

黑色橡膠圈在貼合之前需加黃油潤滑  
(出廠時零件上已有潤滑油,請勿用黏膠接著)

BEFORE STICKING BLACK O-RING, PLEASE ADD SOME LUBRICATING OIL  
(ORIGINAL PARTS HAD LUBRICATING OIL, PLEASE DON'T USE VISCOSE TO STICK IT.)

1. 將車子傾倒不用洩機油機油不會流出  
DON'T NEED TO DISCHARGE ENGINE OIL.



機油底殼螺絲蓋  
OIL PAN SCREW COVER

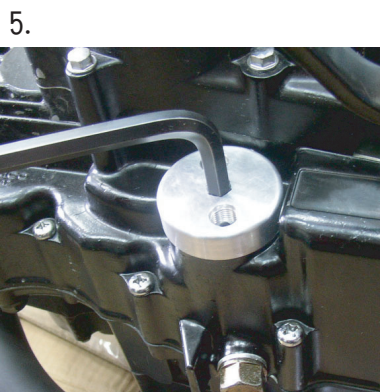


旋轉開  
TAKE APART OIL PAN SCREW COVER



原廠彈簧  
ORIGINAL  
SPRING

和本公司附加的彈簧和側體鎖緊  
LOCK WITH NCY SPRING AND FILTER



用"8號"六角板手鎖緊



IN OUT



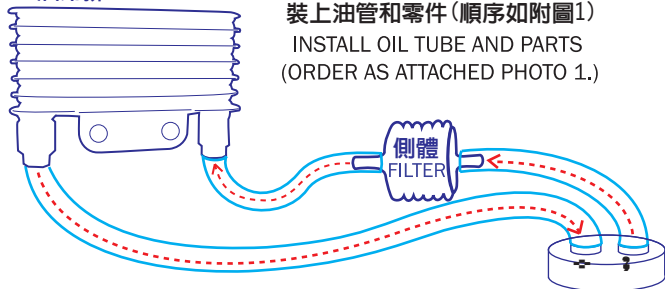
IN OUT



各個零件套上油管並用束環鎖緊即可  
INSTALL OIL TUBE WITH EACH PARTS BY RING  
AND THEN LOCK WELL

8. 完成 FINISH

油冷排 OIL COOLER



裝上油管和零件(順序如附圖1)  
INSTALL OIL TUBE AND PARTS  
(ORDER AS ATTACHED PHOTO 1.)

必須注意OUT的油管線要接"側體"再接到油冷排  
因此安裝零件順序需特別注意  
PLEASE NOTE INSATLLING ORDER,  
FROM "OUT" OIL TUBE CONNECTING TO FILTER TO OIL COOLER.

(附圖1)  
(ATTACHED PHOTO 1.)

### 注意事項:

- 機油冷卻器採"真空負壓"吸汲方式,所以管路必須密封鎖緊,且管路勿自行加大,防止油路循環不良
- 車輛第一次安裝或更換機油需注意,在啟動車輛時需注意油路是否正常循環.檢查方式是在發動約5分鐘之後,以手觸摸油冷排是否有溫熱,若有溫熱才能確定油路有正常循環.請勿拆開管路檢查機油是否通過,會因此負壓不足,導致機油回流.安裝完畢後可打開汽門外蓋,檢查機油有無循環.
- 油冷排安裝寬度及高度有限制(如附圖2)寬度不超過70cm;高度不超過40cm,以防油壓不足無法正常運作.

### ATTENTION:

- OIL COOLER IS FOR THE DRAWING METHOD OF VACUUM PRESSURE, SO YOU HAVE TO TIGHTEN DOWN OIL TUBE AND DON'T MAKE OIL TUBE LONGER IN ORDER TO PREVENT FROM BAD ENGINE OIL CIRCLE.
- AS INSTALLING FIRST TIME OR CHANGING ENGINE OIL, PLEASE NOTICE THAT ENGINE OIL CIRCLING WELL OR NOT AS SCOOTER STARTING. START SCOOTER 5 MINUTES, USE HAND TO TOUCH OIL COOLER AND FEEL THE TEMPERATURE. IF IT IS WARM, THAT MEANS ENGINE OIL CIRCLING IS GOOD. PLEASE DON'T TAKE APART OIL TUBE TO CHECK OIL PASS OR NOT THAT WILL LEAD TO VACUUM PRESSURE NOT ENOUGH TO CIRCLE AND EVEN ENGINE OIL FLOW BACK. AFTER INSTALLING, YOU CAN TAKE APART CYLINDER HEAD SIDE COVER TO CHECK ENGINE OIL CIRCLE WELL OR NOT.
- INSTALLING PLACE FOR OIL COOLER IS LIMITATION FOR LENGTH AND HEIGHT (ATTACHED PHOTO 2.). LENGTH NOT OVER 70CM. HEIGHT NOT OVER 40CM. THAT WILL KEEP GOOD PRESSURE FOR ENGINE OIL CIRCLING.